

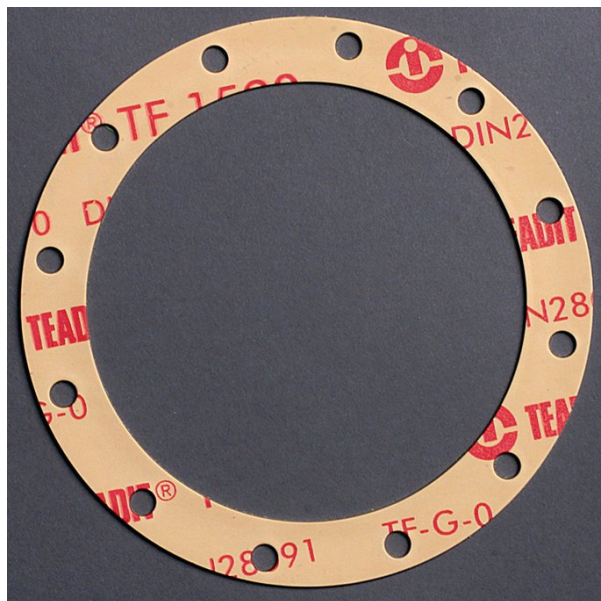
Cut gaskets with and without metal eyelet

Description

The simple flat gasket cut from sheet material remains the most widely used method of flange sealing. However, in today's world of environmental awareness and the need for ever tighter control of emissions, those gaskets may not meet all the latest mandatory regulations. TEADIT has met these ever increasing demands and laws regarding environmental and safety issues (e.g. TA-Luft) by developing a full range of gaskets reinforced with metal eyelets.

Material properties

The main characteristics of gaskets cut from our wide range of jointings, are good adaptability to rough or uneven sealing surfaces, excellent resistance against gases and fluids at high pressure and fluctuating temperature, as well as resistance against aggressive media.



Gaskets with Metal Eyelet

Material for metal eyelet: 316 TI (1.4571)

Advantages

- High resistance against blow-out
- Approval for use with dangerous gases in connection with smooth flanges, according to UVV 61 for gases, and VdTÜV supplement AD-B7 and AD-B8
- Improved effectiveness of seal against dry gases and creeping media
- No contamination of clean media like paints, varnishes, pharmaceutical products, food-stuffs, etc.
- Prevents chemical attack of gasket material
- Prevents erosion of soft gasket material by abrasive media and or high fluid-flow-velocity
- Increases mechanical stability and improves thermal service parameters
- Improves handling of large gaskets
- ensures electrical conductivity in case of insulating gasket materials like PTFE
- Using cut gaskets with metal eyelet reinforcement can considerably improve sealability and operational safety

The following TEADIT jointing materials are available:

Compressed fiber sheets

- NA 1002: Aramid fibers with NBR
- NA 1005: Aramid fibers with NBR
- NA 1040: Cellulose fibers with NBR
- NA 1100: Carbon- and graphite fibers with NBR

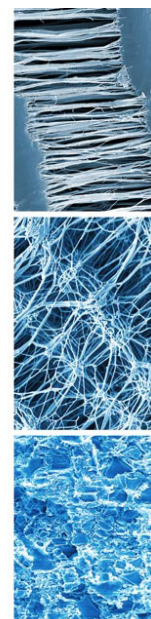
Graphite sheets

- GP 1520: pure flexible graphite, no insert
- GR 1520: with plain metal insert, SS 316
- GE 1520: with tanged metal insert, SS 304, SS 316

PTFE-sheets

- 24 SH: multi-directionally expanded pure PTFE sheet
- Teadit TF 1570: restructured PTFE sheet, filled with hollow glass micro spheres
- Teadit TF 1580: restructured PTFE sheet, filled with Barium Sulphate
- Teadit TF 1590: restructured PTFE sheet, filled with Silica

NO WAY THROUGH



TEADIT INTERNATIONAL - Rosenheimer Str. 10, 6330 Kufstein, AUSTRIA
Tel.: +43-5372-64020-0, Fax: +43-5372-64020-20
austria@teadit.eu - www.teadit.eu